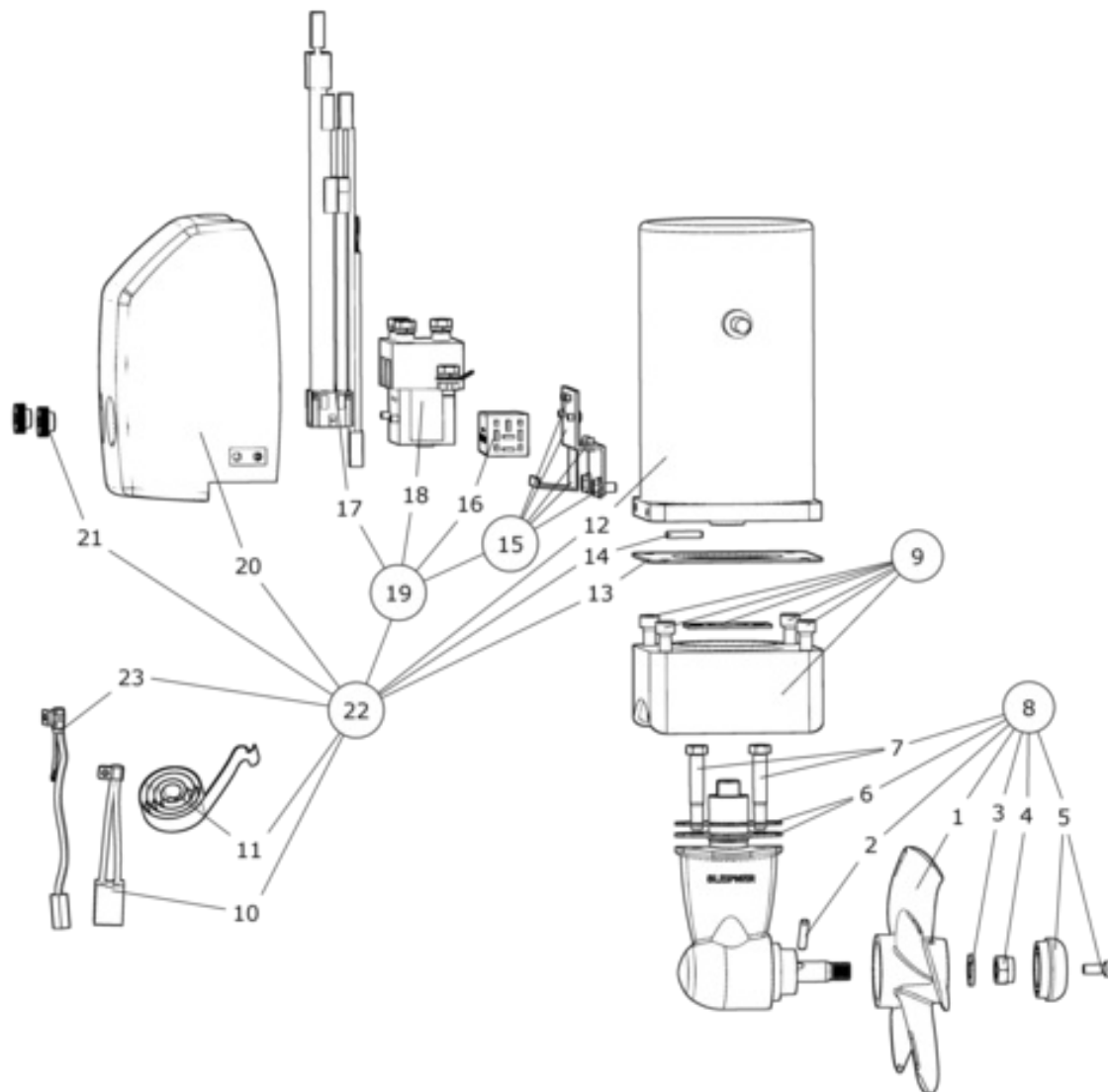


SE60/185S-12V - SE60 SIDE-POWER Tunnel thruster, 12V

Spare parts (valid from 2016-08-29)



#	Description	Product
1	Propeller	4 1261 - Prop ø185/5bl Q-Prop Composite
2	Propeller drivepin	6 1241 - Drivepin for propeller 5mm
3	Propeller washer	7 1181 - Propeller washer
4	Locknut	4 1260 - Locknut
5	Anode	7 1190 A - Alu anode SE60/80/100
6	Gasket	4 0610 - Gasket between tun./brak. SP55
7	Gearleg bolt	6 1080 - Gearleg bolt 4HP/SP55
8	Complete gearleg	4 0602 - Gearleg compl SE60
9	Complete motor bracket	4 0501 - Complete motorbracket SE60
10	Brushes for motor (kit)**	**
11	Brush springs for motor (kit)**	**
12	Electric motor	N/A
13	Gasket	6 1061 - Gasket
14	Key for electric motor shaft	4 2050 - Shearpin 4mm for late 4HP/SP55
15	Solenoid bracket kit	4 0135 - Solenoid bracket kit SP55
16	Electronic control box	6 1232 I - Delay relay 12/24V, new type
17	Internal wiring loom	6 1226 B - Internal coupl. SP40-55-75-95
18	Solenoid	41472123 - Solenoid compl SE40/SE60 12V
19	Complete solenoid kit	4 0131 12 - Solenoid kit compl SE60 12V
20	Solenoid Cover	4 2026 A - Reledeksel SE60S
21	Nut for solenoid cover	6 8807 - Nut for solenoid cover
22	Complete electric motor assembly	4 0101 12 - Electric motor SE60SI-12V
23	Temp switch*	*

(10) ** Please provide thruster serial # when ordering brushes and brush springs

(11) ** Please provide thruster serial # when ordering brushes and brush springs

(23) * Please provide thruster serial # when ordering Temp switch.

The installer alone has responsibility for the installation of the spare parts. Side-Power only warranty the spare parts supplied only.

The information given in the document was correct at the time it was published. However, Sleipner Motor AS can not accept liability for any inaccuracies or omissions it may contain. Continuous product improvement may change the product specifications without notice. Therefore, Sleipner Motor AS can not accept liability for any possible differences between product and document.